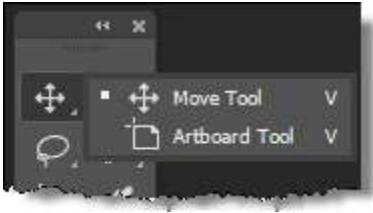


# PhotoShop CC 2020 Tutorials

## 1. Move Tool



The Move Tool allows you to move part of a layered image to a new location. The very first thing that you need to know about the Move Tool that it only works when there is something to move inside the image. If your image has one layer and it is locked, the Move Tool cannot do anything to move the image. You need at least two layers to use the Move Tool. You can also use Move Tool with a single layer provided the single layer is unlocked.

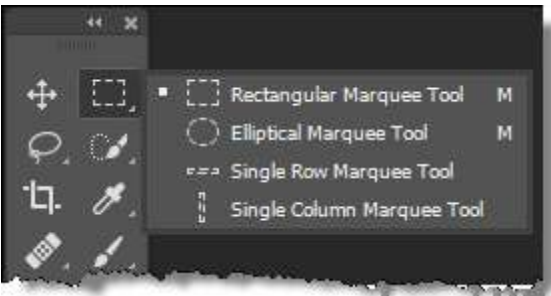
In the image below, the window to the left of the model is in its own layer.



Select the Move Tool and drag the window to another position.



## 2. Marquee Tools



There are several marquee tools that allow you to select areas in an image.

**NOTE:** With any of the selection tools, you can hold shift to add to your selection, and hold option/alt to subtract from the selection.

### I. The Rectangular Marquee Tool



It makes a rectangular selection on your Photoshop image.

## II. The Elliptical Marquee Tool

It allows you to make a round selection.

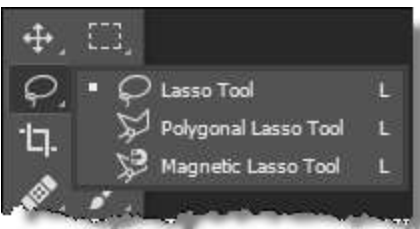
## III. The Single Row Marquee Tool

It makes a 1px horizontal selection that spans the total width of your image. This can be used to create a 1px repeating pattern for your website content.

## IV. The Single Column Marquee Tool

It makes a 1px vertical selection that spans the total height of your image. This can be used to create a 1px repeating pattern for your website content.

## 3. Lasso Tools



There are several lasso tools that also allow you to make selections.

## I. Lasso Tool

The Lasso Tool lets you make loose selections around anything on a layer just like a lasso. It has the same options as the marquee tools.

## II. Polygonal Lasso Tool

The Polygonal Lasso Tool allows you to make selections, but only in a linear way. That is, you can only draw straight lines for your selections.

## III. Magnetic Lasso Tool



The Magnetic Lasso Tool allows you to drag your mouse over the edges of an image, it determines where the edges are, and anchor points are placed at regular intervals. This gives you a very close and controlled selection.

## 4. Quick Selection Tool/Magic Wand Tool



These two tools allow you to make quick selections in slightly different ways.

## I. Quick Selection Tool



The Quick Selection Tool makes a selection based on the edges of objects. As it is with the name, it makes selections quickly, and you can just drag over the areas that you want to select.

## II. Magic Wand Tool

The Magic Wand Tool makes a selection based on where you click your mouse. As with other selection tools, you can hold Shift to add to the selection and hold Option/Alt to take away from your selection.

## 5. Crop Tool



*As we mentioned before, you can also see a short video of each tool to make sure you have the correct one for your workflow as seen above.*

## I. Crop Tool



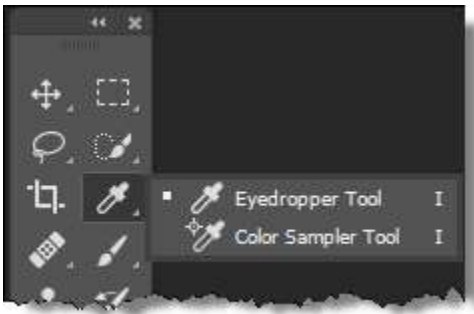
The Crop Tool allows you to crop an image to the sizes that you want. You can input a set ratio, such as 4 x 6 in the ratio, or you can also set a fixed size and resolution for your cropped image.

## II. Perspective Crop Tool

## III. Slice Tool

## IV. Slice Select Tool

# 6. Eyedropper Tool



## I. Eyedropper Tool



The Eyedropper Tool allows you to sample a color from any image so that you can use it in your work. You can control the color area that it samples; it can sample a pixel, or it can sample a range of pixels. Also, you can sample the current layer or all layers.

## II. 3D Material Eyedropper Tool

## III. Color Sampler Tool

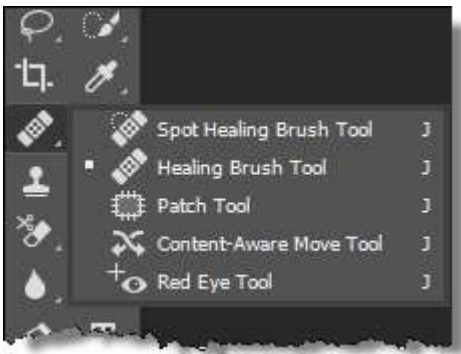
The Color Sampler Tool allows you to sample up to four areas of color within your image so that you can have information about those colors. Like the Eyedropper Tool, you can determine the range of pixels that it samples.

## IV. Ruler Tool

## V. Note Tool

## VI. Count Tool

# 7. Spot Healing Brush/Healing Brush/Patch Tool/Content-Aware Move Tool/Red Eye Tool



## I. Spot Healing Brush Tool

ATTITUDE





The Spot Healing Brush is a great tool for removing blemishes from images. It works with a simple click of the mouse by sampling the surrounding areas and blending the blemish away.

## II. Healing Brush Tool

The Healing Brush Tool allows you to brush out blemishes and areas that aren't desired in your images. Unlike the Spot Healing Brush, the Healing brush requires you to select a reference point.

## III. Patch Tool

The Patch Tool is a great tool where you can make a selection that is similar to the Lasso Tool. Once the selection is made, you can click and drag it to the area to fill it with and when you release it, it patches that area with the selected content.

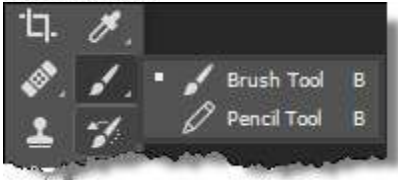
## IV. Content-Aware Move Tool

The Content-Aware Move Tool intelligently tries to fill in any moved content with what it perceives to be there. For example, a rowboat on a beach can be moved, and Photoshop will try to fill in the sand that would be behind the boat.

## V. Red Eye Tool

The Red Eye Tool is a quick way to click on portions of an image that have red-eye and remove them instantly.

## 8. Brush Tool



## I. Brush Tool



The Brush Tool is one of the most important tools that are in your Photoshop toolbox. You will probably use the Brush Tool more than any other tool in Photoshop, especially if you are [retouching images](#). You can change the size of the brush, how hard it is, its shape, texture, opacity, flow, and more.

## II. Pencil Tool

The Pencil Tool allows you to draw on an image like you were using a real pencil, hence the name.

## III. Color Replacement Tool

## IV. Mixer Brush Tool

## 9. Clone Stamp Tool/Pattern Stamp Tool



## I. Clone Stamp Tool

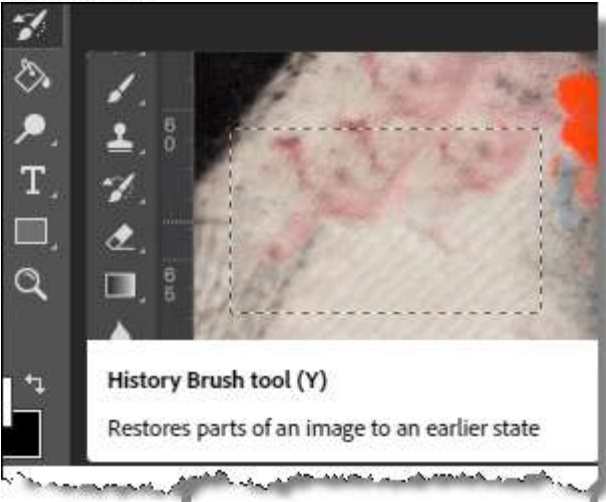


The Clone Stamp Tool is used to clone or copy image information from one area to another. You can hold the Option/Alt key and click an area of an image. Then, click the image to brush with the color and image information that you sampled.

## II. Pattern Stamp Tool

The Pattern Stamp Tool gives you the ability to use a brush-type tool to paint a pattern or texture on your image.

## 10. History Brush Tool



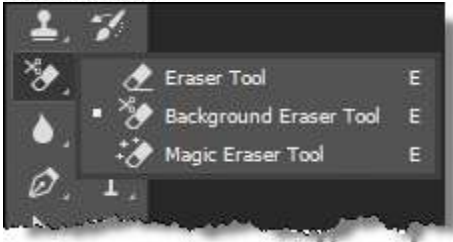
## I. History Brush Tool



With this tool, you can paint with an image snapshot in a different layer. This lets you bring in details from a previous point in your work. It's like an Undo feature.

## I. Art History Brush Tool

## 11. Eraser Tools



## I. Eraser Tool



The Eraser Tool removes pixel information from your image just like a real eraser. You use brushes, which you can specify just like any other brush-related tool in Photoshop such as hardness, shape, texture, opacity, and flow.

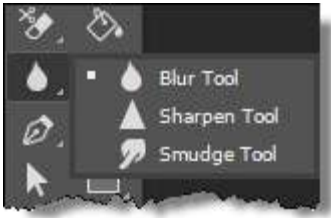
## II. Background Eraser Tool

The Background Eraser Tool is an awesome tool for removing the background from an image. Click and drag the eraser along the edges of an image and its background and it will remove the background. This isn't perfect but it goes a long way toward the goal.

## III. Magic Eraser Tool

The Magic Eraser Tool removes a section of the background of an image and is based on the area that you click on. It does a good job, but sometimes it removes areas that aren't necessary, requiring some trial and error.

## 12. Blur Tool/ Smudge Tool/ Sharpen Tool



### I. Blur Tool

The Blur Tool lets you blur parts of an image, which can help with harsh contrasts between images. Like the Sharpen Tool, it behaves just like a brush and gives you accurate results.

### II. Sharpen Tool

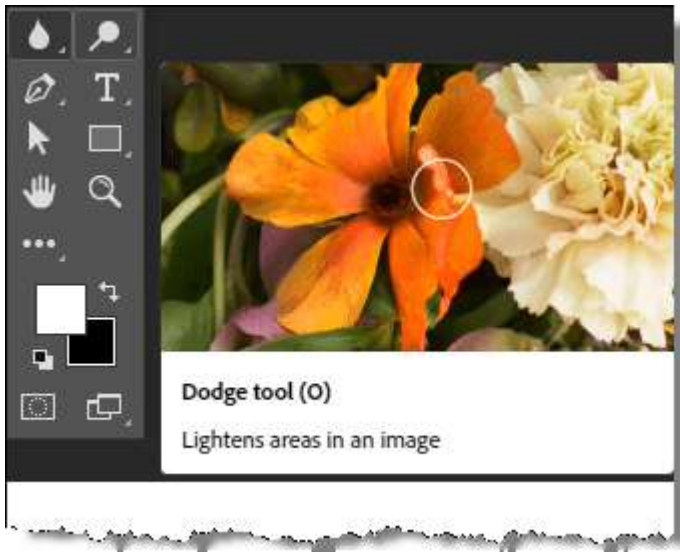
The Sharpen Tool gives you the ability to sharpen areas of an image by painting on them. This gives you a lot of control and accuracy when sharpening images.

### III. Smudge Tool



The Smudge Tool works like a brush too, but it “smudges” pixels and allows you to push them around. It allows you to blend and transition colors easily.

## 13. Dodge Tool/Burn Tool/Sponge Tool



### I. Dodge Tool

The Dodge Tool lets you paint in highlights in the different tone ranges of your images.



The Dodge Tool. Note how the hair and dress are lighter and brighter colors.

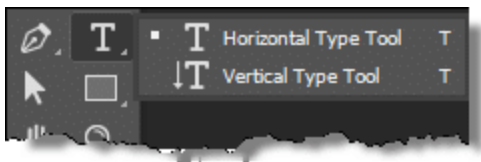
## II. Burn Tool

The Burn Tool lets you paint to dehighlights in the different tone ranges of your images.

## III. Sponge Tool

The Sponge Tool lets you paint in a grey color.

# 14. Text Tool



The Text Tool is the main tool for creating your type in Photoshop.

## I. Horizontal Type Tool

The Horizontal Type Tool lets you type horizontally for normal text.

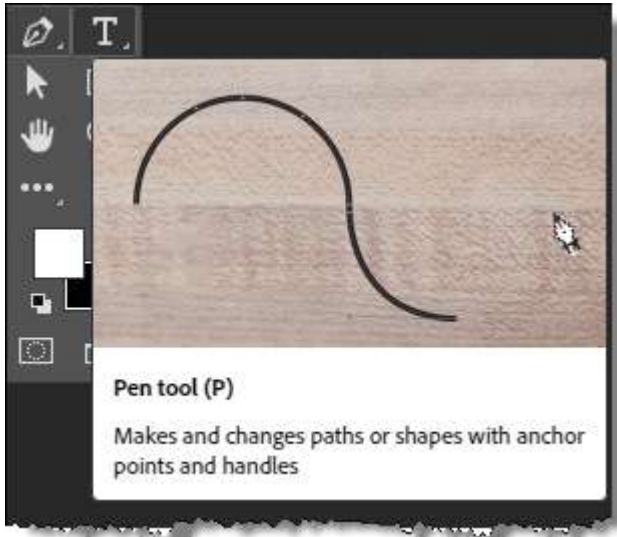
## II. Vertical Type Tool





The Vertical Type Tool lets you type vertically instead of the traditional horizontal method.

## 15. Pen Tool



### I. Pen Tool

With the Pen Tool, you can draw paths for use in your work. Print designers use the Pen Tool in Photoshop to draw paths around objects for their projects. Many print design software such as Quark and InDesign allow you to use [clipping paths](#) embedded from Photoshop so that there are no backgrounds around your images.

Attitude



II. Freeform Pen Tool

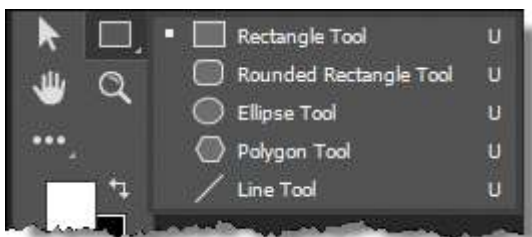
III. Curvature Pen Tool

IV. Add Anchor Point Tool

V. Delete Anchor Point Tool

VI. Convert Point Tool

## 16. Shape Tools



Different shape tools allow you to draw different shapes based on paths or vector shape layers, which gives you well-defined lines.

### I. Rectangle Tool

The rectangle shape tool allows you to create a rectangle shape.

## II. Rounded Rectangle Tool

The rounded rectangle shape tool allows you to create a rounded rectangle shape.

## III. Ellipse Tool



The ellipse shape tool allows you to create a perfect rounded shape.

## IV. Polygon Tool

The polygon shape tool allows you to create a polygon shape.

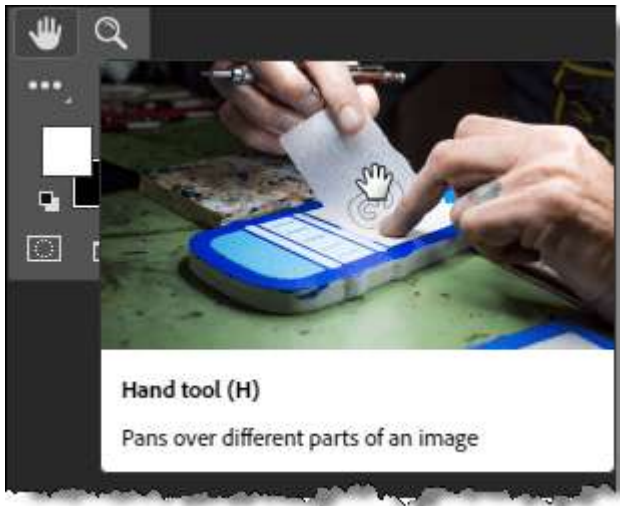
## V. Line Tool

The line tool allows you to create a straight-line shape.

## VI. Custom Shape Tool

The custom shape tool allows you to draw custom shapes.

# 17. Hand Tool



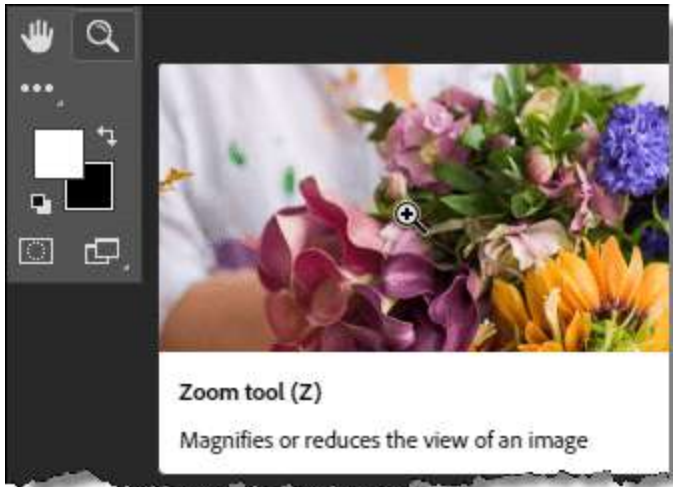
## I. Hand Tool



The Hand Tool lets you move to any area of an image without accidentally dragging around a layer of an object on a layer. You can quickly switch to the Hand Tool any time just by holding the space bar.

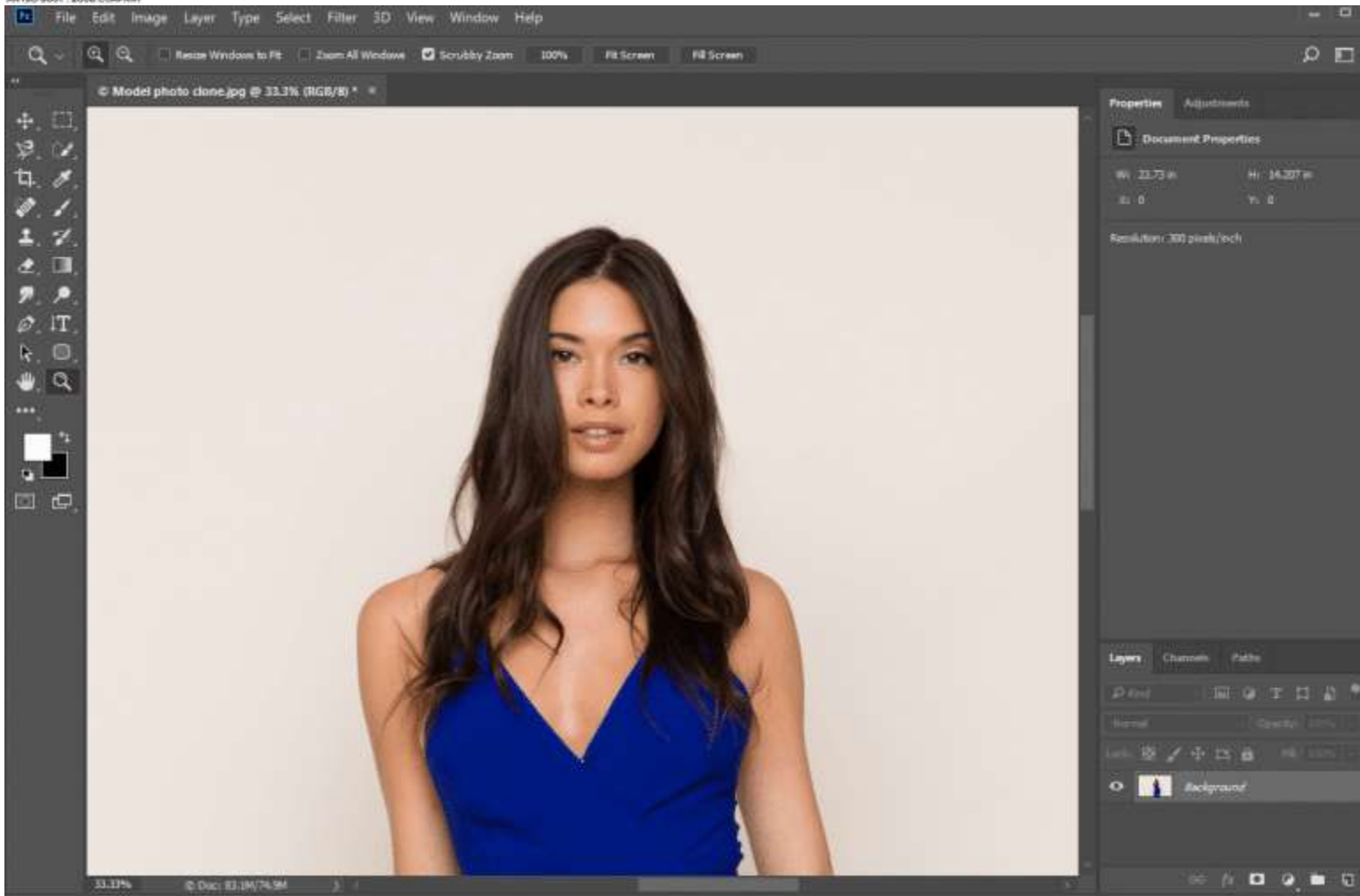
## II. Rotate View Tool

### 18. Zoom Tool



#### I. Zoom Tool

Attitude



The Zoom Tool is used to zoom in and out of your image. It is most commonly used when you want to zoom in on a specific part of an image. You simply click and drag a selection of an image and Photoshop will zoom in on that area.

So there you have a discussion of the more commonly used tools. Take some time with your favourite images to explore these tools in Adobe Photoshop. Happy Practicing ☐

Attitude